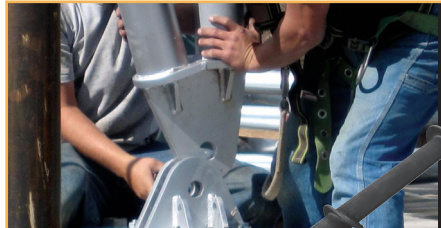


ClearSpan

1.866.643.1010 | www.ClearSpan.com



CLEARSPAN HELICAL ANCHORING SYSTEM

LIMITS CONSTRUCTION TIME AND **SAVES YOU MONEY**

The versatile Helical Anchoring System eliminates the need for expensive excavation and costly foundations.

The anchors drill directly into the ground, creating a secure and dependable hold, while also drastically limiting the amount of required site preparation.

The ClearSpan Helical Anchoring System Advantage:

Ideal, cost-effective option for any application - Every industry appreciates Helical Anchors.

Strong enough to be permanent, but classified as 100% temporary.

Environmentally friendly - Anchors can be removed without damaging or disturbing the surrounding area.

Quick construction timelines.

Versatile - Easily relocate the structure. Great option for traveling jobsites.

Never need to be replaced - Allow buildings to be easily expanded.

Budget friendly and cost-effective - Provides a low cost per sq. ft.



Since 1979, ClearSpan has offered **cost-effective, versatile and energy-efficient building solutions**. We provide in-house design, manufacturing and construction, and pride ourselves on offering **superior customer service**. Our experienced truss arch specialists are highly trained to help you determine the best structure and setup for your needs. With stock, turnkey and design-build solutions, there is a ClearSpan fabric structure for everybody.



Dyersville, Iowa Manufacturing Facility



Fabric Buildings



Hybrid or Metal Buildings



OUR CUSTOMERS WILL EXPERIENCE

Exceptional service - With experienced specialists.
Turnkey and design-build solutions - For all needs.
In-house design and installation services.
Support and guidance - Before and after purchase.
Factory direct to your door.

FOUNDATION OPTIONS

ClearSpan has many other foundation options:

Blocks
Container
Concrete Pad

Piers Posts
Poured Concrete



Blocks



Container



Concrete Pad



Piers Posts



Poured Concrete



COVERS BUILT FOR STRENGTH

Lifting a 2008 Dodge quad using our 12.5 oz cover material and structural steel frame.